

# Success By 6

## Behind Before They Start

First-to-second grade school promotions in Northeast Florida, a community indicator of a child's readiness for school, have been gradually declining over the past decade. Results of the 2006 Florida School Readiness Uniform Screening System indicate that of the approximately 9,000 Northeast Florida kindergartners screened for readiness, 36 percent, or 3,240 were not ready to learn language and literacy skills when they enter kindergarten.

One of the reasons why so many youth fail to develop learning capacities is because they are not exposed to learning activities; they are not challenged and stimulated. Opportunities to gain early literacy skills are in the home and while in childcare settings. However, not all centers provide services aimed at teaching children. Licensing requirements for Jacksonville's childcare centers ensure basic safety, but requirements do not address quality of learning experiences.

Evidence documents that high-quality early education has a lasting positive effect and is more cost effective than efforts to intervene later in life, and that money spent to provide children with quality early learning experiences is vital to community health, not to mention children's futures. In looking at the local picture United Way has learned that quality early education is often out of the reach of those who could benefit the most.

**Success By 6** offers two-year early education grants to hardworking families who do not qualify for state subsidies providing them access to high-quality early-learning care for their children. Participating families sign an agreement stating that they will meet certain involvement expectations with their child's preschool.

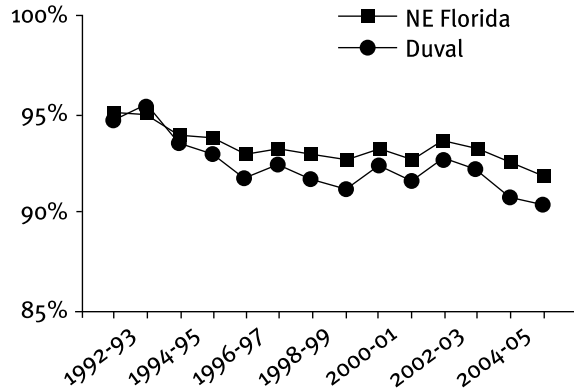
### Current Success By 6 Centers:

- |   |                                      |
|---|--------------------------------------|
| <b>Duval</b>                                      | Methodist Children's Village         |
| Aldridge Day Care                                 | New Dimensions Early Learning Center |
| All About Kids                                    | The Oaks Early Learning Center       |
| All Saints Early Learning & Community Care Center | Punkin Place                         |
| Christ The King Preschool                         | St. Catherine's Preschool            |
| Episcopal Children's Services Dupont              | The Salvation Army Learning Center   |
| Episcopal Children's Services Exchange South      |                                      |
| Happy Acres Ranch                                 | <b>Clay</b>                          |
|   | Childtime Learning Center            |
|   | Gingerbread Learning Center          |

The Florida Institute of Education is evaluating the outcomes of Success By 6 by testing children receiving the early education grants for school readiness, and by measuring growth in parenting skills and home environment.

### First-to-Second Grade Promotions in Northeast Florida and Duval County

Source: 2006 Quality of Life Progress Report, JCCI, <http://www.jcci.org>



### Born learning....

Since children are literally born learning, every experience they have, both negative and positive, affects the development of their brains, physically and physiologically. Brain scans of children who have been abused or neglected show smaller-sized brains and significantly decreased activity.

